



## **The Betting System Truths Weekly Members Newsletter**

**Testing out Systems, Strategies and Tips  
– so that you don't have to!**

**Dates Inclusive  
16<sup>th</sup> August to 22<sup>nd</sup> August 2011**

**Edition 66**

**Edited by  
Rich**

## CONTENTS

|                                     |         |
|-------------------------------------|---------|
| Introduction                        | Page 2  |
| New Reviews –                       |         |
| <a href="#">Betting Tips UK</a>     | Page 3  |
| <a href="#">Point2Lay</a>           | Page 6  |
| <a href="#">Football Formula</a>    | Page 7  |
| <a href="#">The Betplan</a>         | Page 9  |
| Final Reviews – None this week      |         |
| <a href="#">Current Reviews</a>     | Page 9  |
| <a href="#">League Table</a>        | Page 16 |
| <a href="#">Profitability Graph</a> | Page 17 |
| Next Week                           | Page 18 |

## INTRODUCTION

Hi Folks,

This week we have four New Reviews. It's been a bit too busy this week to include part 3 of my Betfair article – it will follow as soon as possible.

The results, league table and profitability graph include Tuesday morning reports, making the newsletter as up to date as possible when you receive the newsletter on the Wednesday morning.

“The Betplan” is the star performer this week with over 50% profit in only 6 days!

We'd like to hear from you, please contact me by e-mail via the Bloggers Corner at [rich@bettingssystemtruths.com](mailto:rich@bettingssystemtruths.com)

## New Reviews

[Return to Contents/Index of this newsletter](#)



# Betting Tips UK – Introduction



Dear all,

**Sgt Rob here with an introduction to his latest review, Betting Tips UK.**

### **Overview**

*Betting Tips UK* is a tips service with a slight twist. There are no monthly subscriptions – instead you pre-purchase tokens, and these tokens are used as credits to receive the tips as and when you want to receive them.

Tips are available on a daily basis normally around midday UK time, either by email, or by logging into the website with a user name and password you set up when you register online.

There are a number of different betting services on offer, and you can either divide your tokens between, or pool them all into just one of the services.

### **Betting Services Available**

There are 3 main betting services (although 1 of them is subdivided):

1a) Multi Sports Betting (Pay On Performance)

1b) Multi Sports Betting (Pay On Winner)

2) Horse Racing Service

3) Soccer Only Combos

Options 2) and 3) do exactly what they say on the tin. Allocate tokens into these options, and if you have elected to receive tips for that day, then that is what you will get. These services are charged as Pay On Winner, there is no Pay On Performance option for these.

The Multi Sports Betting option gives you tips on a wider range of sporting events. You can only choose one of the following options :

Pay On Winner : 1 token deducted for each winning tip. No tokens deducted for losing tips

Pay On Performance : At the end of the day, if the tips made a profit, then 1 token is deducted for each 0.25 points profit. Conversely, if the tips made a loss, then 1 token is credited back for each 0.25 pts loss.

You can choose to toggle between the above two options on a daily basis.

## **Tokens**

Tokens are used as you credits to receive tips. Tokens are purchased online at [Betting Tips UK](#) website via PayPal. Currently, the pricing options are as follows :

15 Tokens for £30 (£2 per token)

30 Tokens for £54 (£1.80 per token)

50 Tokens for £80 (£1.60 per token)

75 Tokens for £117 (£1.56 per token)

100 Tokens for £150 (£1.50 per token)

So, the more tokens you buy up front, the less the cost per token, and these tokens can be topped up at any time.

Each token equates to 1 tip. So if the daily selections consist of 6 tips, then you stand to have 6 tokens deducted on the Pay On Winner service if they all win.

## **Tips/Services Management**

Managing when you receive the tips is quite easy...you go to My Profile (or My Betting Services) on the website, and check the relevant box for each day you don't want tips, or leave it unchecked if you do want them. There are 7 boxes, one for each day of the week, and you can do this for all 3 separate services.

The My Profile page also allows you to toggle between Pay On Winner or Pay On Performance for Multi Sports Betting, and also to opt in or out of the Horse Racing Service and Soccer Only Combos service.

In summary, this page allows you to control what tips you want from each service for up to a week at a time.

If you do change anything on this page, changes have to be saved before 11 a.m. UK time for it to take effect.

## **Staking**

For the Multi Sports Betting service, 5% of your bank is suggested, e.g. £25 bets for a £500 bank, £50 bets for a £1000 bank and so on.

For the Horse Racing Service and Soccer Only Combos, it suggests betting between 1% to 3% of your bank.

There are a number of staking plans given (for free I think) on the website, from well-known plans such as level stakes and percentage stakes through to more exotic plans such as D'Alembert and Labouchere.

## **The Review Itself**

As there are a lot of options here (and potentially a lot of mathematical headaches!) I will start with the following guidelines :

Service : Multi Sports Betting (Pay On Winner)

Betting Bank : £500

Stakes : £25 (5% of starting bank, level stake betting throughout)

Token Bank : 100 tokens (equates to £150, £1.50 per token)

So we have £350 of our betting bank in reserve.

## **Signing off**

Phew. Hope this introductory post has been useful and you enjoy the forthcoming review. If you have any questions or comments then please post.

**[\[Click Here To See Betting Tips UK...\]](#)**

[Return to Contents/Index of this newsletter](#)



[Return to Contents/Index of this newsletter](#)



# Point2Lay Introduction

18th august 2011



## Sergeant Lucian - Introduces Point2Lay

Hi Bloggers,

The *Point2Lay* software is one of two products from UK Horse Racing Bets.

- 1) Point2Lay software – lay software
- 2) Pointer software – backing software

The lay software spots false favourites in horse racing win markets based on TFQR (Tax Free Quid Ratings). Point2Lay runs, scans, rates all UK races. The selections will be highlighted in RED.

The program does all the job for the user, so it isn't necessary to insert any data. There is no need to study data- horse race stats, trainer, jockey, etc, etc. The software does all that for the user.

Betting bot is included. The bot, by default, will not place lay bets on odds over 5.0 but this option can be changed by the user to any desired odds.

### Point2Lay operates in 3 ways:

**1. Manual Mode** – the software spots the selections and the bets are placed manually

**2. Semi-Manual Method** – the software spots the selections and the bets can be placed instantly by using the dropdown menu on the betting bot to select Bet Now

**3. Auto Bet Method** – doesn't need any description. Just spare 2 minutes of your time, set up and go away if you want.

**The UK Horse Racing Bets team recommend Manual Mode** if you are free to be by your computer. But if for any reasons you are away from your computer, the auto betting feature is the option to use.

In order to work smoothly the software needs a good internet connection, a paid Racing Post account (£2 per week) and of course a Betfair account.

About **the price**: Point2Lay is **free for the first 15 days** and then **\$49.99 USD every 3 months**. Alternatively for **one month** the price is **\$24.99 USD**.

On this review it will be use an **initial Bank of 1000 points and will risk 100 point on every bet**.

**Max odds will be 5.0, Manual Mode and BSP will be used for the review**.

For the start Point2Lay will be **reviewed for 56 betting days** and this period will be **extended to 84 days** if everything looks good.

[\[Click here to see Point2lay\]](#)

[Return to Contents/Index of this newsletter](#)



## Football Formula Introduction



### Inspector John Introduces Football Formula

Hi Bloggers

Inspector John here, about to start the review of **Football Formula**, arriving on the stocks just in time for the first Premiership games of the season. *Football Formula* is an email service which drops tips straight into your inbox, with the option of checking them on the parent site. Not sure who I will be receiving them from at present as the introductory email came from Brian Webb, but the website sales pitch is written by Dan (surname unknown).

Subscription to the [Football Formula](#) service costs a pound per day, that is £90 for a 90-day membership. There is a 28-day subscription on offer for £45. Emails arrive by midday and the service is managed by Betfan.

Football Formula covers just about everything to bet on any football market if the value is right and it looks at markets such as Outright Win, Half-time/Full-time, Corners, Bookings, Handicaps, Asian Handicaps, To

Win to Nil, Both teams to Score, Over/Under 2.5 goals and so on. They claim to be exceptional at finding markets that have been overpriced.

Dan does confess to being a football fanatic and a confirmed stato, who works in conjunction with two team members who still work for two of the UK's biggest bookmakers. This pair need to remain anonymous as they have both risen through the ranks and claim to make their firms hundreds of thousand pounds a year.

I am not aware of any restrictions in the service and will report any that come up in the early days of the review. As football is played on virtually every-day of the week I am prepared to post daily reviews, but again I will have better information once we are under way.

The initial review will last for 56 "betting days", with the option to extend to 84 "betting" days. If it turns out we only have bets on one or two days a week, we will go straight to a 12 "betting" weeks review, in this case it would NOT be betting days.

I will be using a staking plan with level stakes of 1pt per selection It is recommended that a 300-point starting bank is used and that once the bank has doubled, the stake is also doubled, which will build up profits faster. There are also bets which have various 'strengths': 10pts maximum bet Super Confident bet that we cannot see losing, 8pts Very Confident bet that we expect to win, 6pts Confident bet that should win and 4pts Good value bet that has a good to fair chance of winning.

I started receiving the selections just in time for the Premiership starting last weekend so I will be starting the review from then. I do try to post updates on the same day as the tips. If there are late or overnight matches I will post early the next morning. There are already a number of ante-post bets that I have received and which I will report on when the bet has been settled.

Dan seems a very enthusiastic guy who obviously loves the game. The proofing figures checked by Betfan over the last four months averaged a profit of over 45 points per month, so let us hope he can retain that progress during the review.

[\[Click here to see Football Formula....\]](#)

[Return to Contents/Index of this newsletter](#)



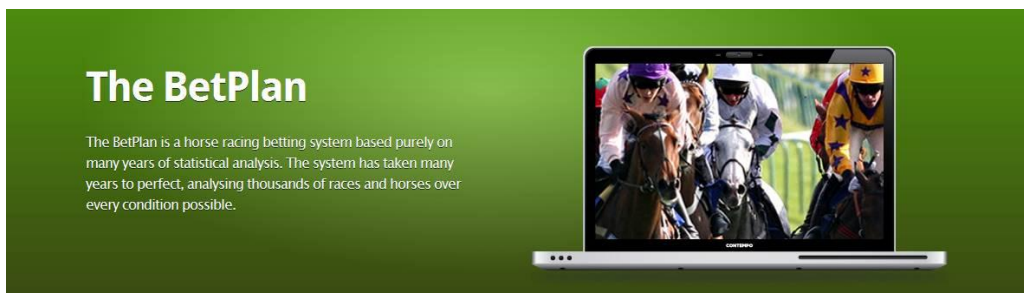


[Return to Contents/Index of this newsletter](#)



# The BetPlan – Introduction

August 18th 2011



## Inspector Adrian – Introduces The Betplan

Hello,

Firstly, as a newcomer to Lay The Odds, I would like to quickly introduce myself, my name is Adrian, I am 48 years old, I live in West Yorkshire and have been involved in the betting side of sports for over 30 years (yes I was a bookie dweller shortly after leaving school at 16). I am a massive fan of horse racing and attend local meetings at Ripon, Wetherby, Catterick & Thirsk plus other local tracks and have done so from an early age with my parents.

I do bet regularly but in a more controlled manner these days, gone are the days when I would blow everything I had simply for the sake of having a bet although I still haven't reached my ultimate level of discipline. I have spent many years looking for the infallible system, whether it be my own creation or from another source but I must admit..... I am still looking! Hopefully we will stumble upon it here at Lay The Odds.

Right, on to my initial quest.

*The BetPlan:*

This system has been tested here before on our other site [bettingsystemtruths.com](#), but sadly failed over the test period. The creators have worked hard behind the scenes, making changes here and there and have re-released the updated version which they have kindly allowed us access to for a retest.

The selections for The BetPlan are made based on years of statistical analysis and emailed daily to subscribers between 10:00 and 11:30 am. There is also an option to receive selections by SMS or they can be automatically backed by using one of the betting bots listed on their site that have the required capability. The owners claim that there are normally

one or two selections per day, although there have been three selection so far for both yesterday and today.

They recommend using a 5% Ratchet staking plan, the details of which are available on their site and they say it is advantageous to take the early odds available as they claim on the site that "the bookies are aware of them and a very high percentage will shorten very quickly in price".

The BetPlan service claims to have improved their strike rate of 44% to over 50% since the system selection process was upgraded in August 2010 and is offered at £45.00 per month or £47.00 per month if you require the SMS service.

They are also offering another systems selections FREE when you subscribe to the BetPlan called ATOM (A Touch Of Magic) although this may not be free forever if I am reading their details correctly, they state "At the moment ATOM selections are totally free if you are a member of The BetPlan". The ATOM selections are sent by email the night BEFORE racing and claim to be less odds orientated thus offering some selections at greater odds than the BetPlan selections.

I intend to offer you an honest, detailed and open opinion on the BetPlan system and cover it in as many ways as possible, not only using their recommended staking plan but also at sp returns, level stakes as well as several other staking plans too. I will also be tracking the ATOM results for you too.

The initial review will last for 56 betting days, so any days without selections will not be counted, hopefully at that stage The Betplan will have performed well enough for the review to be extended to 84 betting days.

Regards

Inspector Adrian

[\[Click here to see The BetPlan\]](#)

[Return to Contents/Index of this newsletter](#)



## **Final Reviews**

**None this week**

# Current Reviews

[Return to Contents/Index of this newsletter](#)



This section gives a quick insight how each review is performing. The data in Blue is from BettingSystemTruths.com. The data in Dark Violet is from LayTheOdds.com

**Systems:** These are a set of rules that are used to make selection criteria. These rules are hard and fast without room for interpretation or discretion.

**Methods or Strategies:** These services are based upon loose rules or advices that are applied, with skill, by the user of the service.

**Tips:** You receive tips from the service provider of back or lay bets and you back the tips to the recommended stakes or to level stakes.

## ABSX System X-IV

Reviewer Sgt Tommy

Backing Method/Strategy

A poor week for all selections, but Tommy's method is doing well

| Up to day 51   | This Week |                      | Cumulative |
|----------------|-----------|----------------------|------------|
|                | P/L       | 100 point Start Bank | P/L        |
| All Selections | -53.54    | 89.16                | -10.84     |
| Tommy's Method | 4.24      | 141.16               | 41.16      |

[See the ABSX System X-IV Review pages here...](#)

[See the ABSX System X-IV Sales pages here...](#)

## Assured Soccer Profits

Reviewer Insp. Karl

Trading Strategy/Method

Review suspended until the start of the new football season

| Up to week 1 | This Week |                | Cumulative |
|--------------|-----------|----------------|------------|
|              | P/L       | 300 Start Bank | P/L        |
|              | 0.00      | 304.00         | 4.00       |

[See the Assured Soccer Profits Review pages here...](#)

[See the Assured Soccer profits Sales pages here...](#)

### Betfair Success Formula

Reviewer Sgt Rich

Laying Method/Strategy

Review suspended until the start of the new football season

| Up to day 63 | This Week | Cumulative           |       |
|--------------|-----------|----------------------|-------|
|              | P/L       | 100 point Start Bank | P/L   |
|              | 0.00      | 159.64               | 59.64 |

[See the Betfair Success Formula Review pages here...](#)

[See the Betfair Success Formula Sales pages here...](#)

### Betting Pro Trades

Reviewer Insp. Stuart

Trading Tips

Nothing reported this week

| Up to day 7 | This Week | Cumulative        |        |
|-------------|-----------|-------------------|--------|
|             | P/L       | £2,000 Start Bank | P/L    |
|             | 0.00      | 1,925.75          | -74.25 |

[See the Betting Pro Trades Review pages here...](#)

[See the Betting Pro Trades Sales pages here...](#)

### Betting Profits

Reviewer Sgt Rich

Backing System

Review suspended until the start of the new football season

| Up to day 57  | This Week | Cumulative            |        |
|---------------|-----------|-----------------------|--------|
|               | P/L       | 1000 point Start Bank | P/L    |
| Soccer System | 0.00      | 1,446.62              | 446.62 |

[See the Betting Profits Review pages here...](#)

[See the Betting Profits Sales pages here...](#)

### Betting Tips UK

Reviewer Sgt Rob

Backing Tips Service

| Up to day 1   | This Week | Cumulative          |       |
|---------------|-----------|---------------------|-------|
|               | P/L       | 20 point Start Bank | P/L   |
| Soccer System | -1.96     | 18.04               | -1.96 |

[See the Betting Tips UK Review pages here...](#)

[See the Betting Tips UK Sales pages here...](#)

**Bonus Bagging**

Reviewer Insp. Magnifique

Free Bet Alerts

Nothing reported this week

| Up to week 7 | This Week | Cumulative      |        |
|--------------|-----------|-----------------|--------|
|              | P/L       | £250 Start Bank | P/L    |
|              | 0.00      | 619.30          | 369.30 |

[See the Bonus Bagging Review pages here...](#)

[See the Bonus Bagging Sales pages here...](#)

**Expected Winners**

Reviewer Insp. John

Back & Lay Tipping Service

Nothing reported this week

| Up to day 27    | This Week | Cumulative           |        |
|-----------------|-----------|----------------------|--------|
|                 | P/L       | 100 point Start Bank | P/L    |
| Main Back Bets  | 0.00      | 56.27                | -43.73 |
| Main Lay Bets   | 0.00      | 96.73                | -3.27  |
| Main E/W Bets   | 0.00      | 76.63                | -23.37 |
| Main Naps       | 0.00      | 97.27                | -2.73  |
| Greyhound Back  | 0.00      | 80.77                | -19.23 |
| Greyhound Lay   | 0.00      | 175.85               | 75.85  |
| Additional Bets | 0.00      | 113.59               | 13.59  |
| Totals          | 0.00      | 697.11               | -2.89  |

[See the Expected Winners Review pages here...](#)

[See the expected Winners Sales pages here...](#)

**Football Filter Premium**

Reviewer Insp. DJ

Software Tipping Service

| Up to week 1    | This Week | Cumulative          |       |
|-----------------|-----------|---------------------|-------|
|                 | P/L       | 50 point Start Bank | P/L   |
| Original Trixie | -2.08     | 47.92               | -2.08 |
| Special Trixie  | -2.89     | 47.11               | -2.89 |

[See the Football Filter Premium Review pages here...](#)

[See the Football Filter Premium Sales pages here...](#)

### Football Formula

Reviewer Insp. John

Backing Tips Service

A good start

| Up to day 11 | This Week | Cumulative           |       |
|--------------|-----------|----------------------|-------|
|              | P/L       | 300 point Start Bank | P/L   |
|              | 22.36     | 322.36               | 22.36 |

[See the Football Formula Review pages here...](#)

[See the Football Formula Sales pages here...](#)

### Football Power Betting

Reviewer Sgt Lucian

Betting Software

| Up to week 1  | This Week | Cumulative             |        |
|---------------|-----------|------------------------|--------|
|               | P/L       | 1,000 point Start Bank | P/L    |
| Perms         | -50.00    | 950.00                 | -50.00 |
| Correct Score | -50.00    | 950.00                 | -50.00 |
| Covered       | 21.00     | 1,021.00               | 21.00  |

[See the Football Power Betting Review pages here...](#)

[See the Football Power Betting Sales pages here...](#)

### Full Time Betting Income

Reviewer Sgt Tony

Laying System

| Up to Day 80 | This Week | Cumulative           |        |
|--------------|-----------|----------------------|--------|
|              | P/L       | 200 point Start Bank | P/L    |
|              | -3.14     | 130.01               | -69.99 |

[See the Full Time Betting Income Review pages here...](#)

[See the Full Time Betting Income pages here...](#)

### Laying Summer Profits

Reviewer Sgt Tony

Laying System

| Up to Day 80 | This Week | Cumulative       |       |
|--------------|-----------|------------------|-------|
|              | P/L       | £2000 Start Bank | P/L   |
|              | -76.00    | 2,033.00         | 33.00 |

[See the Laying Summer Profits Review pages here...](#)

[See the Laying Summer Profits Sales pages here...](#)

### Magic Racing Bot

Reviewer Insp. Lucien

Bot Laying Service

A bad week

| Up to day 43 | This Week | Cumulative          |       |
|--------------|-----------|---------------------|-------|
|              | P/L       | 75 point Start Bank | P/L   |
|              | 8.57      | 95.10               | 20.10 |

[See the Magic Racing Bot Review pages here...](#)

[See the Magic Racing Bot Sales pages here...](#)

### Major League Profits

Reviewer Insp. Lucien

Backing Tips Service

| Up to week 10 | This Week | Cumulative          |      |
|---------------|-----------|---------------------|------|
|               | P/L       | 20 point Start Bank | P/L  |
|               | 1.18      | 28.80               | 8.80 |

[See the Major League Profits Review pages here...](#)

[See the Major League Profits Sales pages here...](#)

### Pro Betfair Trading

Reviewer Insp. Rich

Trading Strategy/Method

| Up to day 50 | This Week | Cumulative            |       |
|--------------|-----------|-----------------------|-------|
|              | P/L       | 500 points Start Bank | P/L   |
|              | -7.79     | 527.59                | 27.59 |

[See the Pro Betfair Trading Review pages here...](#)

[See the Pro Betfair Trading Sales pages here...](#)

### Profitable Lays

Reviewer Insp. DJ

Laying System

| Up to day 40 | This Week | Cumulative            |      |
|--------------|-----------|-----------------------|------|
|              | P/L       | 100 points Start Bank | P/L  |
|              | 14.87     | 105.65                | 5.65 |

[See the Profitable Lays Review pages here...](#)

[See the Profitable Lays Sales pages here...](#)

### Racing Profits

Reviewer Insp. Magnifique

Place Backing System

Following up to two qualifiers per day

| Up to day 23 This Week |                       | Cumulative |
|------------------------|-----------------------|------------|
| P/L                    | 100 points Start Bank | P/L        |
| -0.29                  | 101.02                | 1.02       |

[See the Racing Profits Review pages here...](#)

[See the Racing Profits Sales pages here...](#)

### Rebel Betting

Reviewer Sgt Rich

Automated Method/Strategy

A mistake this week, resulted in a loss

| Up to day 35 This Week |                       | Cumulative |
|------------------------|-----------------------|------------|
| P/L                    | 2000 point Start Bank | P/L        |
| -10.96                 | 2,679.39              | 679.39     |

[See the RebelBetting Review pages here...](#)

[See the RebelBetting Sales pages here...](#)

### Sprint Lay Expert

Reviewer Sgt Tony

Laying System

A good week again

| Up to day 141 This Week |                   | Cumulative |
|-------------------------|-------------------|------------|
| P/L                     | £1,000 Start Bank | P/L        |
| 347.00                  | 2,496.00          | 1,496.00   |

[See the Sprint Lay Expert Review pages here...](#)

[See the Sprint Lay Expert Sales pages here...](#)

### Sprinter Lays

Reviewer Insp. Lee

Lay Tipping Service

| Up to day 74 This Week |                      | Cumulative |
|------------------------|----------------------|------------|
| P/L                    | 75 points Start Bank | P/L        |
| 1.25                   | 79.55                | 4.55       |

[See the Sprinter Lays Review pages here...](#)

[See the Sprinter Lays Sales pages here...](#)



**The Betplan**

Reviewer Insp. Adrian

Backing Tips Service

A great start!

| Up to day 6 | This Week | Cumulative             |        |
|-------------|-----------|------------------------|--------|
|             | P/L       | 1000 points Start Bank | P/L    |
|             | 504.35    | 1,504.35               | 504.35 |

[See the Sprinter Lays Review pages here...](#)

[See the Sprinter Lays Sales pages here...](#)

**The Killer Instinct**

Reviewer Sgt Karl

Lay Tipping Service

A successful week

| Up to day 29 | This Week | Cumulative           |       |
|--------------|-----------|----------------------|-------|
|              | P/L       | 300 point Start Bank | P/L   |
|              | 13.51     | 332.50               | 32.50 |

[See the Killer Instinct Review pages here...](#)

[See the Killer Instinct Sales pages here...](#)

**The Legacy & Saver System**

Reviewer Sgt Jon

Two Backing Systems

Two separate systems

| Up to day 82 | This Week | Cumulative           |      |
|--------------|-----------|----------------------|------|
|              | P/L       | 100 point Start Bank | P/L  |
|              | 1.19      | 104.53               | 4.53 |

[See the Legacy and Saver Review pages here...](#)

[See the Legacy and Saver Sales pages here...](#)

**The Low Lay**

Reviewer Sgt Rich

Laying Tipping Service

A bad week

| Up to day 66 | This Week | Cumulative          |       |
|--------------|-----------|---------------------|-------|
|              | P/L       | 20 point Start Bank | P/L   |
|              | -5.55     | 12.13               | -7.87 |

[See the Low Lay Review pages here...](#)

[See the Low Lay Sales pages here...](#)

**Tips for Betting**

Reviewer Insp. Tony

Tennis Tipping Service

| Up to day 62 | This Week | Cumulative            |      |
|--------------|-----------|-----------------------|------|
|              | P/L       | 100 points Start Bank | P/L  |
|              | 4.00      | 104.49                | 4.49 |

[See the Tips for Betting Review pages here...](#)

[See The Tips for Betting Sales pages here...](#)

**Turf Wars Review #2**

Reviewer Insp. Karl

Backing Tipping Service

This is being tested again for the new soccer season

| Up to day 10 | This Week | Cumulative            |        |
|--------------|-----------|-----------------------|--------|
|              | P/L       | 150 points Start Bank | P/L    |
|              | -25.20    | 90.00                 | -60.00 |

[See the Turf Wars Review pages here...](#)

[See The Turf Wars Sales pages here...](#)

[Return to Contents/Index of this newsletter](#)



# League Table of Current Reviews

[Return to Contents/Index of this newsletter](#)



A reasonable way of comparing the performance of systems is to work out the profit (or loss) as a percentage of the starting bank. Obviously this table doesn't replace reading the reviews, because *profit as %age of bank* is not the only factor in judging a system. Nevertheless, it is a valid at-a-glance way of bringing the mass of data together.

I've colour coded the reviews that are the currently most successful, with the colour of their profitability graph to make them easier to spot. Some of the suspended reviews have been taken off the graph.

Betplan has shot into the table at #4. ABSX – All Selections version has crashed down the table. But ABSX – Tommy's selections is still doing well.

| System Reviewed                           | Start Bank | Total Profit /Loss | Profit as %age of Bank | Position Last Week | Position This Week |
|---|------------|--------------------|------------------------|--------------------|--------------------|
| Sprint Lay Expert                         | 1000       | 1496.00            | 149.60%                | 2                  | 1                  |
| Bonus Bagging                             | 250        | 369.30             | 147.72%                | 1                  | 2                  |
| Betfair Success Formula                   | 100        | 59.64              | 59.64%                 | 3                  | 3                  |
| The Betplan                               | 1000       | 504.35             | 50.44%                 | N/A                | 4                  |
| Betting Profits Soccer                    | 1000       | 446.62             | 44.66%                 | 4                  | 5                  |
| Major League Profits                      | 20         | 8.80               | 44.00%                 | 6                  | 6                  |
| ABSX Tommy's Method                       | 100        | 41.16              | 41.16%                 | 7                  | 7                  |
| RebelBetting                              | 2000       | 679.39             | 33.97%                 | 8                  | 8                  |
| Magic Racing Bot                          | 75         | 20.10              | 26.80%                 | 9                  | 9                  |
| Football Formula                          | 300        | 22.36              | 7.45%                  | N/A                | 10                 |
| Sprinter Lays                             | 75         | 4.55               | 6.07%                  | 12                 | 11                 |
| Profitable Lays                           | 100        | 5.65               | 5.65%                  | 19                 | 12                 |
| Pro Betfair Trading                       | 500        | 27.59              | 5.52%                  | 10                 | 13                 |
| The Legacy & Saver System                 | 100        | 4.53               | 4.53%                  | 13                 | 14                 |
| Tips for Betting                          | 100        | 4.49               | 4.49%                  | 15                 | 15                 |
| Football Power Betting – Covered          | 1000       | 21.00              | 2.10%                  | N/A                | 16                 |
| Laying Summer Profits                     | 2000       | 33.00              | 1.65%                  | 11                 | 17                 |
| Assured Soccer Profits                    | 300        | 4.00               | 1.33%                  | 14                 | 18                 |
| Racing Profits                            | 100        | 1.02               | 1.02%                  | N/A                | 19                 |
| Expected Winners                          | 700        | -2.89              | -0.41%                 | 16                 | 20                 |
| Betting Pro Trades                        | 2000       | -74.25             | -3.71%                 | 17                 | 21                 |
| Football Filter Premium – Original Trixie | 50         | -2.08              | -4.16%                 | N/A                | 22                 |
| The Killer Instinct                       | 300        | -12.58             | -4.19%                 | 18                 | 23                 |
| Football Power Betting – Perms            | 1000       | -50.00             | -5.00%                 | N/A                | 24                 |

|  |            |               |                |          |           |
|--|------------|---------------|----------------|----------|-----------|
| Football Power Betting – Correct Score   | 1000       | -50.00        | -5.00%         | N/A      | 25        |
| Football Filter Premium – Special Trixie | 50         | -2.89         | -5.78%         | N/A      | 26        |
| Betting Tips UK                          | 20         | -1.96         | -9.80%         | N/A      | 27        |
| <b>ABSX All Selections</b>               | <b>100</b> | <b>-10.84</b> | <b>-10.84%</b> | <b>5</b> | <b>28</b> |
| Full Time Betting Income                 | 200        | -69.99        | -35.00%        | 22       | 29        |
| The Low Lay                              | 20         | -7.87         | -39.35%        | 20       | 30        |
| Turf Wars                                | 150        | -60.00        | -40.00%        | 21       | 31        |

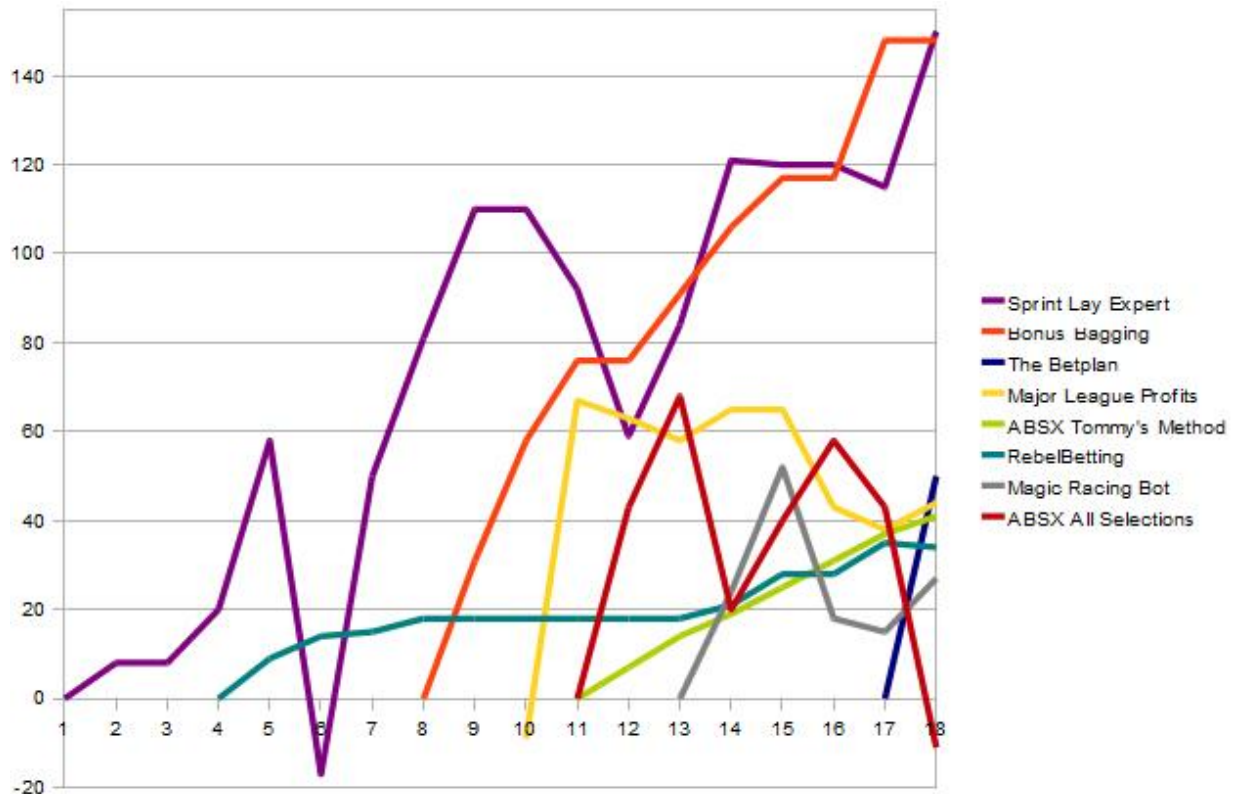
[Return to Contents/Index of this newsletter](#) 

## Profitability Graph

Here is a graph of the profit being made by the front-runners as a percentage of their starting bank. This gives a week by week comparative view of their progress.

It gives a representation of the volatility or dependability of each system. Ideally we would want a graph that increased each week by roughly the same amount. If a system or tipping service could produce that, then we would really have a winning review!

### Profit as a %age of starting bank



## **Next Week & Signing Off**

This is Rich signing off. Remember to read the full blogger's review for anything that interests you at <http://www.bettingsystemtruths.com/>, and <http://laytheodds.com> so that you can get a feel for how the service pans out on a day by day basis. Look out for the next BST newsletter in your e-mails on August 31<sup>st</sup>. Until then, here's to successful punting.

**Regards**  
**Rich**